



Microsoft® System Center Virtual Machine Manager 2008

Maximize Resources, Achieve Agility, Leverage Existing Skills

System Center Virtual Machine Manager 2008 provides a management solution for the virtualized data center that helps enable centralized management of IT infrastructure, increased server utilization, and dynamic resource optimization across multiple virtualization platforms.

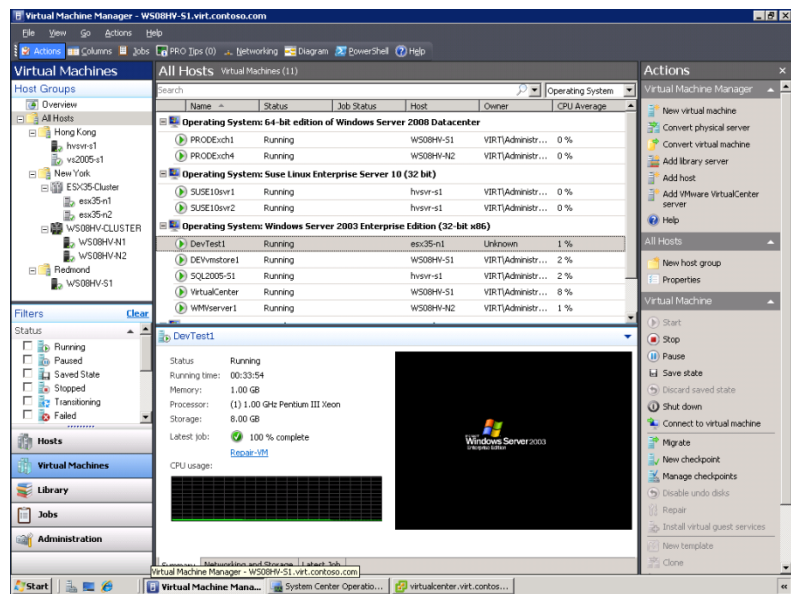
Virtual Machine Manager delivers the following key features:

- Designed for managing virtual machines running on Windows Server® 2008 Hyper-V™ and Microsoft Hyper-V Server.
- Virtualization support for virtual machines running on Microsoft Virtual Server and VMware ESX.
- End-to-end support for consolidating physical servers onto a virtual infrastructure.
- Performance and Resource Optimization (PRO) for dynamic and responsive management of virtual infrastructure.
- Intelligent Placement of virtual workloads on the best-suited physical host servers.
- A complete library to centrally manage all the building blocks of the virtual data center.

Server, Virtual Machine Manager (VMM) provides compatibility with VMware VI3 through Virtual Center integration. VMM supports VMware-specific features such as VMotion while also providing VMM-specific features like Intelligent Placement to VMware servers. It further provides a straightforward wizard that can convert VMware virtual machines to VHDs through an easy and speedy Virtual-to-Virtual (V2V) transfer process.

Intelligent Placement

When a virtual machine is deployed, Virtual Machine Manager analyzes physical performance data and resource requirements for both the workload and the host. This allows an IT administrator to fine-tune placement algorithms to get tailor-made deployment recommendations. This process is essential to maximizing the utilization of physical assets, whether the organization's goal is to balance loads among existing hosts or to maximize resource usage on each host.



Administrator console of System Center Virtual Machine Manager 2008

Maximize IT Resources

Across virtualization platforms, System Center delivers straightforward and complete support for consolidating multiple physical servers within a virtual infrastructure, thus increasing overall utilization of physical servers.

Heterogeneous Virtualization Management from One Console

In addition to running on the newly available Hyper-V platform and the previously supported Microsoft Virtual

Fast, Reliable P2V Conversions

Virtual Machine Manager helps improve the P2V experience by integrating the P2V conversion process and by using the Volume Shadow Copy Service (VSS) of Windows to create a virtual machine faster and without having to interrupt the source physical server.

Centralized Resource Management

The Virtual Machine Manager Administrator Console provides a central work area for performing resource tuning. Resource settings can be changed on virtual machines without interrupting workloads and virtual machines can be migrated from one host to another to optimize physical resources.

Achieve Agility

Virtual Machine Manager provides rapid provisioning of virtual machines by administrators and authorized users.

Dynamic or Event-based Resource Optimization

Performance and Resource Optimization (PRO) is a feature of Virtual Machine Manager, which helps customers ensure that their virtual machine infrastructure is operating in an ideal and efficient manner. PRO uses administrator-set rules and policies to dynamically respond to poor performance or failures of virtualized hardware, operating systems or applications. PRO is also an open and extensible framework allowing vendors and IT professionals to utilize the functionality of PRO from their products and solutions.

Rapid Virtual Machine Provisioning

Virtual Machine Manager enables quick provisioning of new virtual machines. Using a wizard-based user interface, IT administrators can rapidly deploy virtual machines across the entirety of the enterprise. Virtual Machine Manager also allows management and migration of existing virtual machines amongst multiple physical hosts, giving IT administrators a complete and holistic view of their virtual infrastructure.

Centralized Library

The library in Virtual Machine Manager centrally manages all the building blocks of the virtual data center, such as virtual hard disks, CD/DVD media images, post deployment customization scripts and hardware configurations, as well as templates and ISO images.

Rapid Deployment of Virtual Machine Templates

The library in Virtual Machine Manager adds an important tool to the administrator's toolkit: virtual machine

templates. Templates contain both the guest operating system configuration and the hardware configuration, to ensure consistency in the data center.

Centralized Monitoring

Once workloads are consolidated onto a virtual infrastructure, Virtual Machine Manager provides IT administrators with reports and monitoring data. These capabilities can be extended with integration with Operations Manager 2007.

authorized users while maintaining precise control over the management of virtual machines.

Leverage Existing Skills

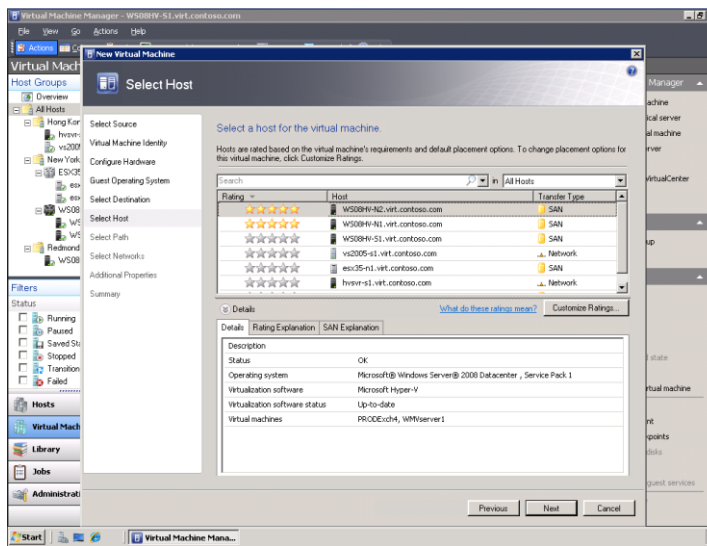
Virtual Machine Manager maximizes the use of the IT department's existing Windows Server and System Center expertise, thus minimizing the need for extensive retraining of administrators and Help Desk personnel.

Familiar Interface, Common Foundation

The Virtual Machine Manager Administrator Console is built on the familiar System Center Framework user interface, helping administrators quickly and easily become proficient in managing their virtual machines.

Windows PowerShell™ integration

Virtual Machine Manager is written completely around Windows PowerShell, an administrator-focused command shell and scripting language with more than 170 standard command-line tools and consistent syntax and utilities.



Screen showing Intelligent Placement recommendations.

Delegated Administrator Role

Available in this version of Virtual Machine Manager is also the delegated administrator role, allowing specialization of the tasks and functions that administrators are assigned. For example, a delegated administrator may be given responsibility for managing the virtualization needs of a specific host group of servers or sub-segment of users.

Delegated Management of Virtual Infrastructure

Virtualization is commonly used in Test and Development environments, where there is constant provisioning and tear down of virtual machines for testing purposes. This latest version of Virtual Machine Manager features a thoroughly reworked and improved self-service web portal, through which administrators can delegate this provisioning role to

For more information about System Center: Virtual Machine Manager, visit:

www.microsoft.com/scvmm

www.microsoft.com/systemcenter

www.microsoft.com/virtualization